

EXTEND THE POWER AND VALUE OF RISK MANAGEMENT WITH WEB SERVICES

Systems, Content and Application Integrations Enhance Platform Value

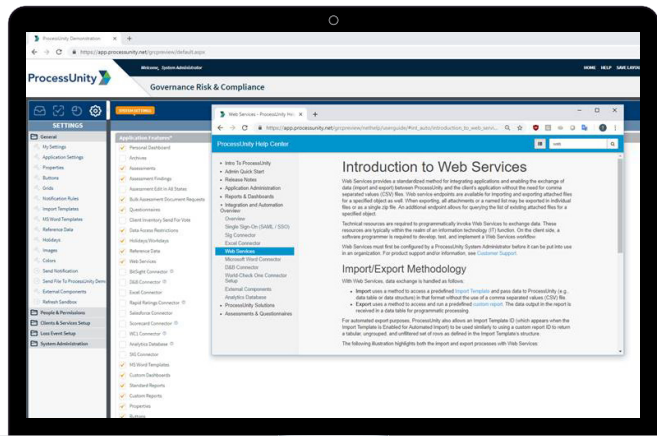
Risk management systems deliver significant benefits by centralizing processes into a single, automated platform that standardizes workflows and reduces manual effort. With ProcessUnity, you can derive even greater value by integrating it with other enterprise systems, external data sources, and analysis and reporting applications.

At a Glance

- Easily and quickly create manual integrations through a simple Web interface
- Build and run easy batch integrations through your scripts that run at predefined intervals
- Automatically integrate your applications with ProcessUnity using a documented Web Services interface

Integrating your risk management platform with other systems, including internal applications and external content sources, allows you to augment your risk management process with richer data, reduce or eliminate redundant data inputs, and extend the reach of your risk management process into more areas of your organization. With ProcessUnity, your third-party risk management platform can connect to anything you want or need – enhancing the value of your platform investment.

- **Integration with Internal Systems** – Tie into your existing systems such as ERP, contract management, CRM, and GRC applications to create seamless procurement-vetting activities, collaborate in third-party onboardings, create centralized data sources that eliminate data silos, and more.
- **Integration with External Content Sources** – By adding external data sources and providers into a third-party risk-management platform you gain deep expertise in security, financial status, and potential risk profiles – with no additional resources required. Prebuilt connectors and APIs make integration easy, helping you reinforce your program with intelligence from credible and experienced experts.
- **Integration with Analytics and Reporting** – Conduct sophisticated analyses of third-party risk data and produce complex report analytics. Connectors allow you to import/export data into a variety of applications for analytics and reporting; professionally formatted reports; data manipulation and analytics capabilities; or custom dashboards with drill-down capabilities.



Example Integrations

ERP - Oracle ERP, Oracle EBS, Ariba, PeopleSoft, SAP, and Workday

Contract Management - Novatus, Icertis

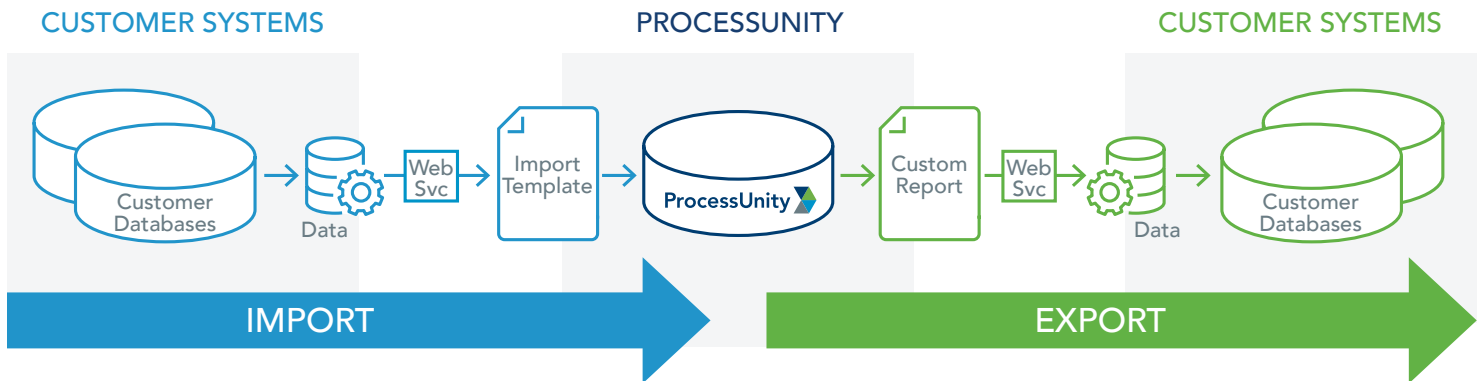
CRM - Salesforce and Oracle CRM

GRC – Archer, MetricStream, and ServiceNow

Embedded External Content – MorningStar, Yahoo Finance

External Data Providers – BitSight, Dun & Bradstreet, NominoData, RapidRatings, Refinitiv (formerly Thomson Reuters World-Check), SecurityScorecard, Shared Assessments

Analysis and Reporting – Microsoft Word, Microsoft Excel, Tableau



ENHANCE THE REACH AND IMPACT OF YOUR RISK MANAGEMENT PROCESSES

ProcessUnity's import, export, and integration capabilities make it easy to align key information in your ProcessUnity solutions with related data in core enterprise systems such as ERP, CRM, GRC, contract management, back office applications, and external content.

With ProcessUnity's simple and accessible integration approach, you can share data seamlessly at the level and frequency you need, eliminating duplicate data entry and ensuring consistent risk management driven by authoritative enterprise information sources.

ProcessUnity's easy import templates, filtered report exports, integration capabilities, and web service interfaces enable you to exchange data with other applications and streamline the development and loading of content.

MAKE IT HAPPEN WITH A SIMPLE WEB INTERFACE

Using a simple web interface, you design and configure unique import templates and custom report feeds. When it's time to add data, you have three options:

Manual Integration - ProcessUnity lets you manually map fields from external data sources to your templates and reports, enabling you to create streamlined two-way data flows on-demand. The UI provides for template-based import mappings and export feeds that can be built easily and incorporate any customer-defined fields or relationships that are created to support their business requirements.

Batch Integration – Build your own scripts to perform imports and reports on your own custom schedule. Leveraging technologies like PowerShell, or cURL, or other batch invocation scripting tools to control the schedule and manage a flat file-based data migration both into and out of ProcessUnity.

Web Services Integration – When you want real-time updates to your workflows and analyses, you can set up Web Services Integration. Build your own C++ programs to automatically and programmatically pull and push data through a ProcessUnity's well-documented API. While configuration of the ProcessUnity application is performed by an Application Administrator, Web Services development is typically separately performed by a programmer.

